

# Wowicak'upi

Many-Tears' Heyoka Pipe Song  
on a purpose-selected tone row

Op.89

Marshall M Kerr

## 1. Tatuye topa ♩=90

Musical score for the first system, measures 1-8. The score is for Flute, Cor Anglais, Baritone Solo, and Violoncello. The time signature changes from 3/8 to 2/4 at measure 2. The Flute, Cor Anglais, and Baritone Solo parts are mostly rests. The Violoncello part begins with a melody starting on a half note in 3/8 time, moving to 2/4 time at measure 2. The dynamic marking *mp* is present below the Violoncello staff.

Musical score for the second system, measures 9-11. The score is for Flute (Fl.), Cor Anglais (C. A.), Baritone Solo (Bar. Solo), and Violoncello (Vc.). Measure 11 is marked with a rehearsal mark '11'. The Flute and Cor Anglais parts are mostly rests. The Baritone Solo part has a melody starting at measure 9, with lyrics: "Wa - kan Wi-yo-hpe-ya-tan-han, wo-wi - ca-k'u - pi." The Violoncello part has a melody starting at measure 9. The dynamic marking *mp* is present below the Baritone Solo staff.

21

Fl.

C. A.

Bar. Solo

Vc.

Wa - kan Wa-zi-ya-ta - tan-han, wo-wi - ca-k'u - pi.

*mp*

30

Fl.

C. A.

Bar. Solo

Vc.

Wa - kan Wi-yo-hi-yan-pi - tan-han, wo-wi - ca - k'u

38

Fl.

C. A.

Bar. Solo

Vc.

pi. Wa - kan I-to-ka-ga-tan-han, wo-wi - ca-k'u

48

Molto più mosso ♩=124

Fl.

C. A.

Bar. Solo

Vc.

*pp*

*pp*

pi.

Molto più mosso ♩=124

*pp*

54

Fl.

C. A.

Bar. Solo

Vc.

59

Fl.

C. A.

Bar. Solo

Vc.

*p*

67 2. Hanwi ♩.=60

Fl.

C. A.

Bar. Solo

Vc.

*pp*

*pp*

*p*

*pp*

76

Fl.

C. A.

Bar. Solo

Vc.

*p*

*p*

*p*

82

Fl.

C. A.

Bar. Solo

Vc.

*p*

Han - wi, pi-la-ma-yan ye - lo. Wo-wi-ca - k'u-pi

91

3. Unci

Fl.

C. A.

Bar. Solo

Vc.

*p*

Un - ci, pi-la-ma-yan. Wo-wi-

3. Unci

*p*

99

Fl.

C. A.

Bar. Solo

Vc.

ca-k'u-pi, ci - cu-pi.

108

4. Wakinyan Sapa ♩=90

Fl.

C. A.

Bar. Solo

Vc.

*mp*

Wa-kin-yan Sa - pa, li - la pi - la-ma-yan ye-lo.

4. Wakinyan Sapa ♩=90

116

Fl. *mp* *mf*

C. A.

Bar. Solo *mf*  
Wo-wi-ca-k'u-pi, ci - cu -

Vc. *mp*

5. Tunkasila ♩=124

123

Fl. *f* *dim.al...*

C. A. *mf* *f* *dim.al...*

Bar. Solo  
pi.

5. Tunkasila ♩=124

Vc. *mf* *f* *dim.al...*



131

Fl.

C. A.

Bar. Solo

Vc.

*p*

*p*

*p*

141

♩.=70

Fl.

C. A.

Bar. Solo

Vc.

*mf*

*mf*

*mf*

Wa-kan Tan - ka, Tun-ka - si - la, wi-co-ni k'o

♩.=70

*mf pizz.*

150

Fl.

C. A.

Bar. Solo

Vc.

ye - la ca li - la - pi - la - ma - yan ye - lo.

155

Fl.

C. A.

Bar. Solo

Vc.

Wo-wi-ca - k'u - pi, ci - cu - pi.

*arco*

# Wowicak'upi

Flute

Many-Tears' Heyoka Pipe Song  
on a purpose-selected tone row

Marshall M Kerr

Op.89

1. Tatuye topa ♩=90

23

34

Molto più mosso ♩=124

50

58

2. Hanwi ♩=60

67

79

3. Unci

92

104

110 4. Wakinyan Sapa ♩=90

Flute

116

124

*mp* *mf*

Detailed description: This musical staff contains measures 116 to 124. It begins with a treble clef, a key signature of one flat (B-flat), and a 2/4 time signature. The music starts with a half rest, followed by a series of eighth and quarter notes. A long slur covers the entire staff. The dynamic markings *mp* and *mf* are placed below the staff. The staff ends with a double bar line and a 2/4 time signature.

125

5. Tunkasila ♩=124

132

*f* *dim.al...*

Detailed description: This musical staff contains measures 125 to 132. It starts with a treble clef, a key signature of one flat, and a 2/4 time signature. The music features a series of eighth and quarter notes with slurs. The dynamic markings *f* and *dim.al...* are present. The staff ends with a double bar line.

133

141

*p*

Detailed description: This musical staff contains measures 133 to 141. It begins with a treble clef, a key signature of one flat, and a 2/4 time signature. The music consists of quarter and eighth notes with slurs. The dynamic marking *p* is located below the staff. The staff ends with a double bar line and a 2/4 time signature.

142

♩.=70

153

*mf*

Detailed description: This musical staff contains measures 142 to 153. It starts with a treble clef, a key signature of one flat, and a 3/8 time signature. The music is primarily composed of rests and short note groups. The dynamic marking *mf* is below the staff. The staff ends with a double bar line and a 2/4 time signature.

154

162

Detailed description: This musical staff contains measures 154 to 162. It begins with a treble clef, a key signature of one flat, and a 3/8 time signature. The music features rests and short note groups. The staff ends with a double bar line and a 2/4 time signature.

Cor Anglais

# Wowicak'upi

Many-Tears' Heyoka Pipe Song  
on a purpose-selected tone row

Marshall M Kerr

1. Tatuye topa ♩=90 Op.89

Musical notation for the first system of 'Tatuye topa'. It consists of six measures of rests, each with a time signature above it: 2/8, 4/4, 8/8, 4/4, 4/8, and 4/8.

Musical notation for the second system of 'Tatuye topa', starting at measure 27. It begins with a rest in 3/8 time, followed by a quarter note in 2/4 time, and then a melodic phrase in 3/8 time marked *mp*. The system ends with a rest in 2/4 time and a quarter note in 3/8 time.

Musical notation for the third system of 'Tatuye topa', starting at measure 36. It features a rest in 3/8 time, a quarter note in 2/4 time, and a melodic phrase in 3/8 time. The system concludes with a rest in 2/4 time and a melodic phrase in 7/8 time.

Musical notation for the fourth system of 'Tatuye topa', starting at measure 50. It is marked *Molto più mosso* ♩=124 and *pp*. The system contains a complex melodic line with many sixteenth notes.

Musical notation for the fifth system of 'Tatuye topa', starting at measure 58. It features a melodic phrase in 3/8 time, followed by a rest in 2/4 time, and then a melodic phrase in 3/8 time. The system ends with a melodic phrase in 3/8 time marked *p*.

Musical notation for the first system of 'Hanwi', starting at measure 67. It begins with a melodic phrase in 3/8 time marked *pp*, followed by a rest in 2/4 time, and then a melodic phrase in 3/8 time. The system ends with a rest in 2/4 time and a melodic phrase in 2/4 time.

Musical notation for the second system of 'Hanwi', starting at measure 79. It features a melodic phrase in 3/8 time, followed by a rest in 2/4 time, and then a melodic phrase in 3/8 time. The system concludes with a rest in 2/4 time and a melodic phrase in 4/8 time.

Musical notation for the third system of 'Hanwi', starting at measure 92. It consists of six measures of rests with time signatures: 4/8, 2/4, 2/4, 2/4, 6/8, and 6/8. The system is marked *p*.

Musical notation for the fourth system of 'Hanwi', starting at measure 110. It consists of four measures of rests with time signatures: 2/8, 2/4, 8/8, and 2/8.

2

Cor Anglais

5. Tunkasila ♩=124

123

*mf* *f* *dim.al...*

132

*p*

142 ♩.=70

*mf*

154

*mf*

# Wowicak'upi

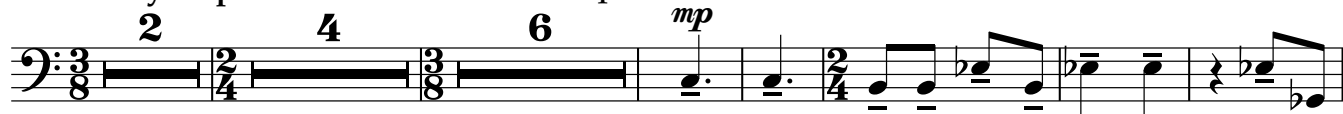
Baritone Solo

Many-Tears' Heyoka Pipe Song  
on a purpose-selected tone row

Marshall M Kerr

1. Tatuye topa  $\text{♩}=90$

Op.89



Wa - kan Wi-yo-hpe-ya-tan-han, wo-wi

18



ca-k'u - pi. Wa - kan Wa-zi-ya-ta-tan-han, wo-wi-ca-k'u - pi.

28



Wa - kan Wi-yo-hi-yan-pi - tan-han, wo-wi - ca - k'u

38



pi. Wa - kan I-to-ka-ga-tan-han, wo-wi - ca-k'u - pi.

50

Molto più mosso  $\text{♩}=124$



67

2. Hanwi  $\text{♩}=60$



Han - wi, pi-la-ma-yan ye-lo. Wo-wi-ca - k'u-pi

91

3. Unci



Un - ci, pi-la-ma-yan. Wo-wi-ca-k'u-pi, ci -

105

4. Wakinyan Sapa  $\text{♩}=90$



cu - pi. Wa-kin-yan Sa - pa, li-la pi - la - ma-yan

115



ye - lo. Wo-wi-ca - k'u-pi, ci - cu - pi.

125

5. Tunkasila  $\text{♩}=124$



## Baritone Solo

141 *mf* ♩.=70

Wa-kan Tan - ka, Turka - si - la, wi-co-ni k'o - ye-la ca

151

li - la - pi - la - ma - yan ye - lo. Wo - wi - ca -

156

k'u - pi, ci - cu - pi.



# Wowicak'upi

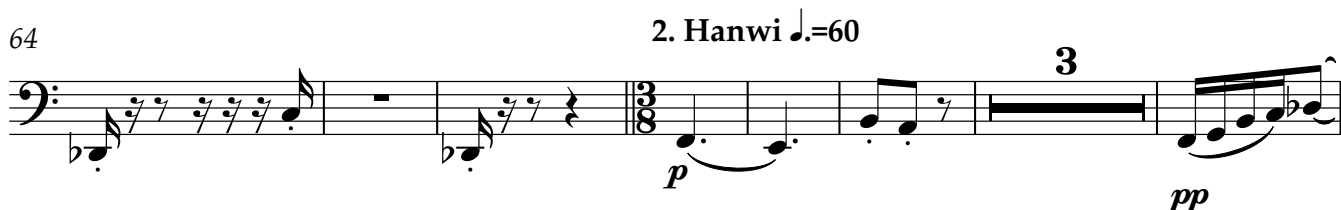
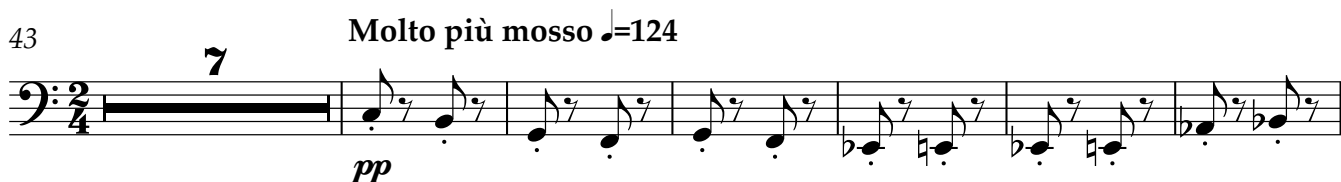
Violoncello

Many-Tears' Heyoka Pipe Song  
on a purpose-selected tone row

Marshall M Kerr

## 1. Tatuye topa ♩=90

Op.89



Violoncello

117

117

*mp*

*mf*

125 5. Tunkasila ♩=124

125

*f*

*dim.al...*

133

133

*p*

142 ♩.=70

142

*mf pizz.*

154

154

*arco*